

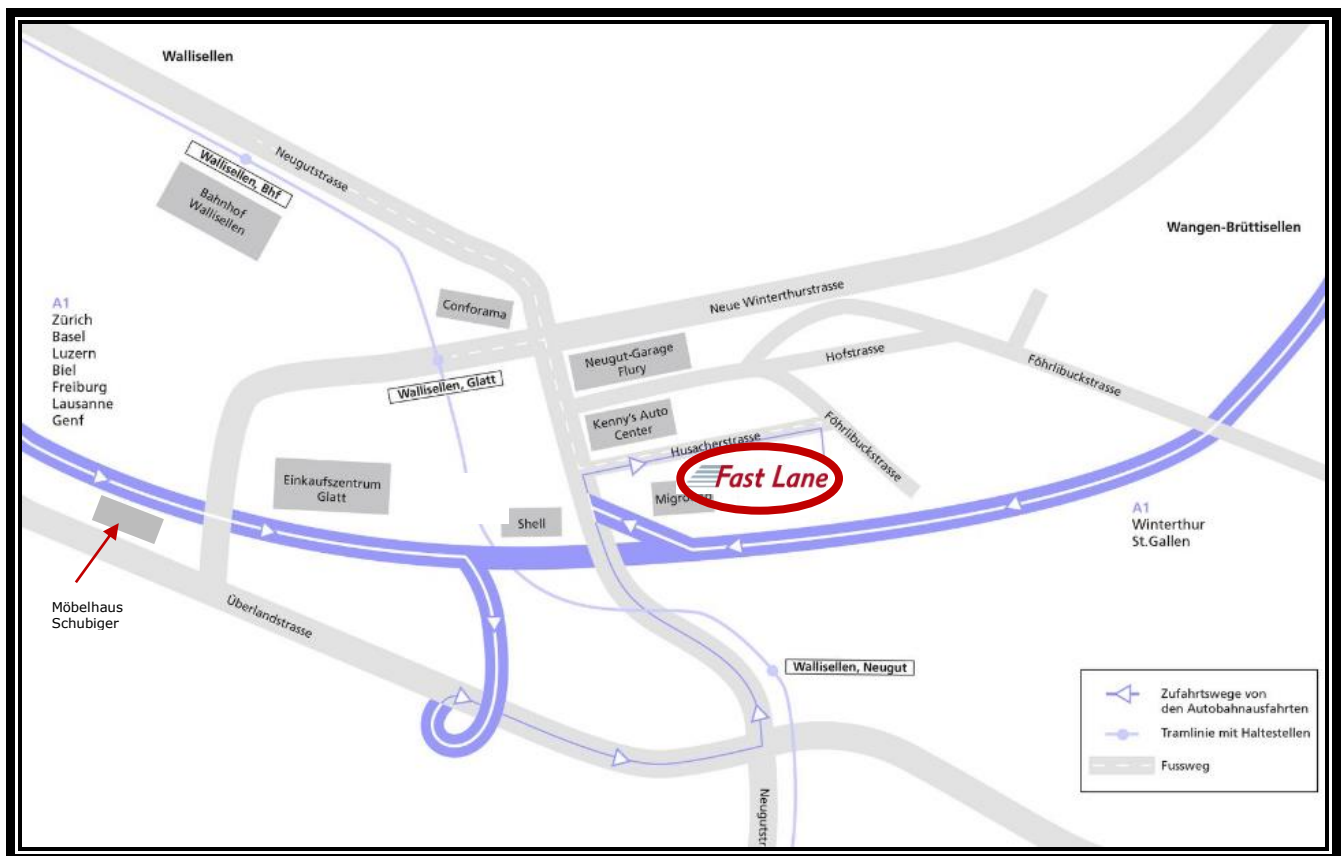
DIRECTION TO FAST LANE TRAINING CENTER - WALLISELLEN/ZURICH

**Fast Lane Institute for Knowledge Transfer (Switzerland) AG
Husacherstrasse 3, 8304 Wallisellen (Zurich)**

Phone. No.: +41 (0)44 832 50 80

Internet: www.flane.ch

E-Mail: info@flane.ch



Driving Direction to Fast Lane/Wallisellen ZH:

If you plan to travel by car, please contact us previously via phone +41 (0)44 832 50 80 to make sure that we have free parking space available. We will then explain how and where you can park your car.

From Zurich:

Merge onto Highway A1 in direction Winterthur/St. Gallen; take the exit 4 toward "Zurich-Aubrigg/Schwamendingen/Wallisellen. Follow the "Überlandstrasse (Use any lane slightly left onto Ueberlandstr./Route 1) until the traffic light before the Möbelhaus Schubiger, turn left toward "Winterthur/Wallisellen/Einkaufszentrum" and continue onto the middle lane. Just after the "Conforama" (on your left hand) turn right - look for sign "Dübendorf". After about 60 metres turn left onto "Husacherstrasse" (just before the Shell gas station/Migrolino).

From St.Gallen / Winterthur:

Merge onto highway A1 in direction Zurich; take the exit 65 toward "Wallisellen/Oerlikon/Schwamendingen". Keep right at the fork and follow signs for Wallisellen (not Glattzentrum). At the traffic lights turn right toward "Wallisellen". Just after the Shell gas station/Migrolino turn immediately right onto Husacherstrasse.

From Zurich Airport:

Distance from the Airport Zurich to Fast Lane: ca. 8.0 km ~ 10 minutes by car

Take the highway A51 in direction "St. Gallen/Zürich/Bern/Basel".

Keep left and continue in direction of A1/A4/E41 "Zurich-City/Schaffhausen/St. Gallen"

Take the exit 65 toward "Wallisellen/Dübendorf/Schwamendingen" As soon as you took the exit continue on the left lane towards "Dübendorf". Merge onto "Überlandstrasse" and continue. After a while, turn left - look for sign "Wallisellen-Seidenstrasse". Continue and turn right just after the Shell gas station & Migrolino.

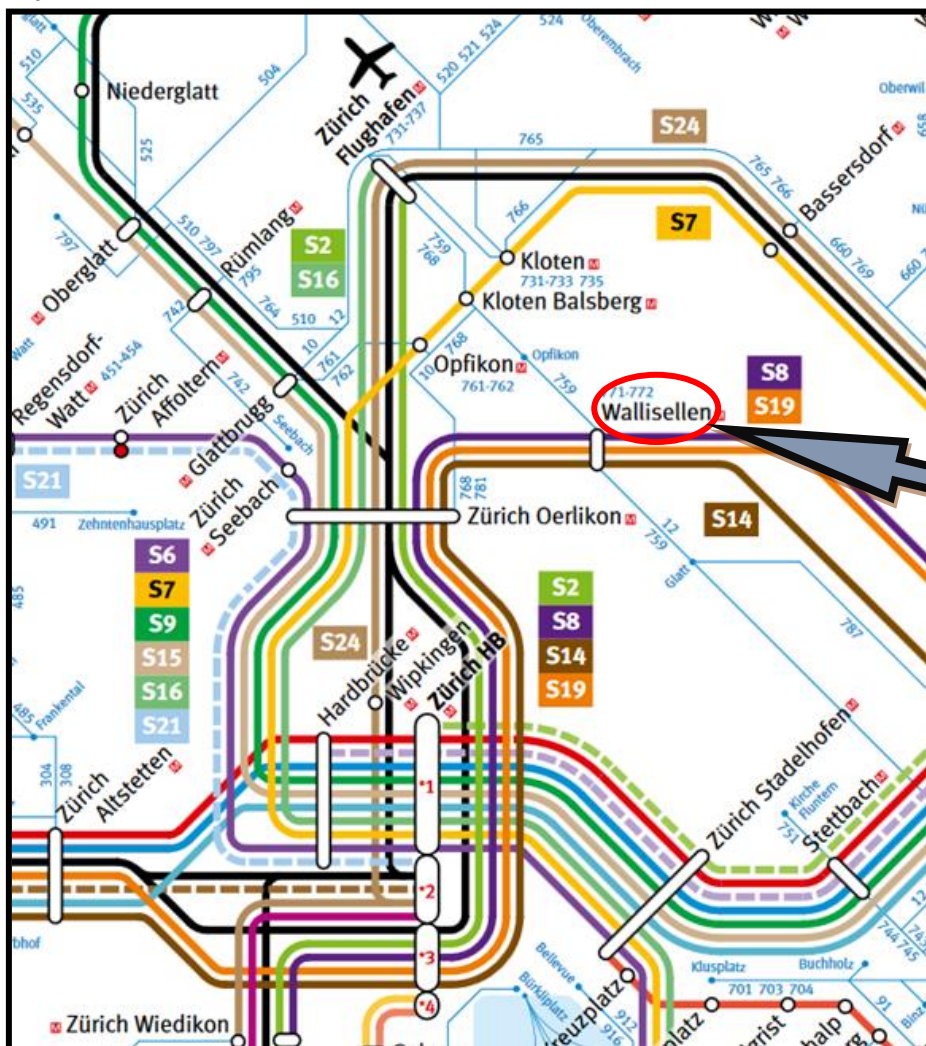
See also Google Maps Route planner: <http://www.flane.ch/en/school/1>

Taxi from the airport to the Fast Lane Training Center: Destination: Wallisellen, Husacherstrasse 3

By public transport to Fast Lane:

By Train/S-Bahn (Municipal Railway), Wallisellen station

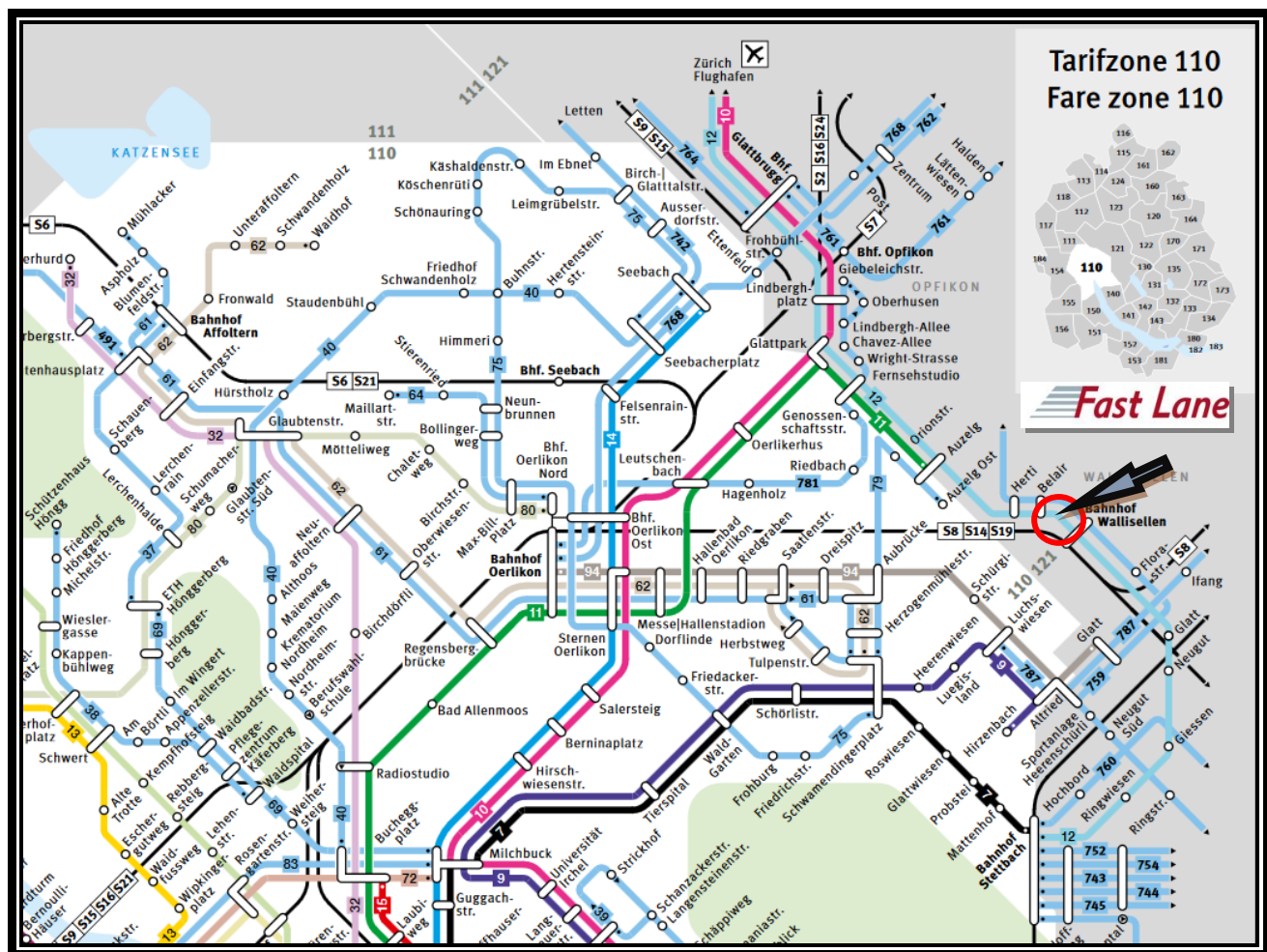
From Zurich-Hauptbahnhof (Main Station) (S8, S14 or S19) or Winterthur (S8), exit at **Wallisellen station**



Glattalbahn-Line 12, exit at Wallisellen Glatt (Tram) (departure all 15 minutes)
 From the stop Wallisellen Glatt (Tram): take a walk to Husacherstrasse 3, approx. 5 - 6 minutes
 Attention: At the stop do not go into the shopping mall Glatt, but walk down the stairs.

Bus 759, exit at Wallisellen Glatt (Bus)
 From the stop Wallisellen Glatt (Bus) take a walk to Husacherstrasse 3, approx.. 7 – 8 minutes.

From the **Airport Zurich**: take the **Glattalbahn-Line 12 to Wallisellen Glatt (Tram)** (departure all 15 minutes)
 From the stop Wallisellen Glatt (Tram): take a walk to Husacherstrasse 3, approx. 5 - 6 minutes
 Attention: At the stop do not go into the shopping mall Glatt, but walk down the stairs.



For more information take a look at SBB Web timetable:
<https://www.sbb.ch/en/timetable.html>

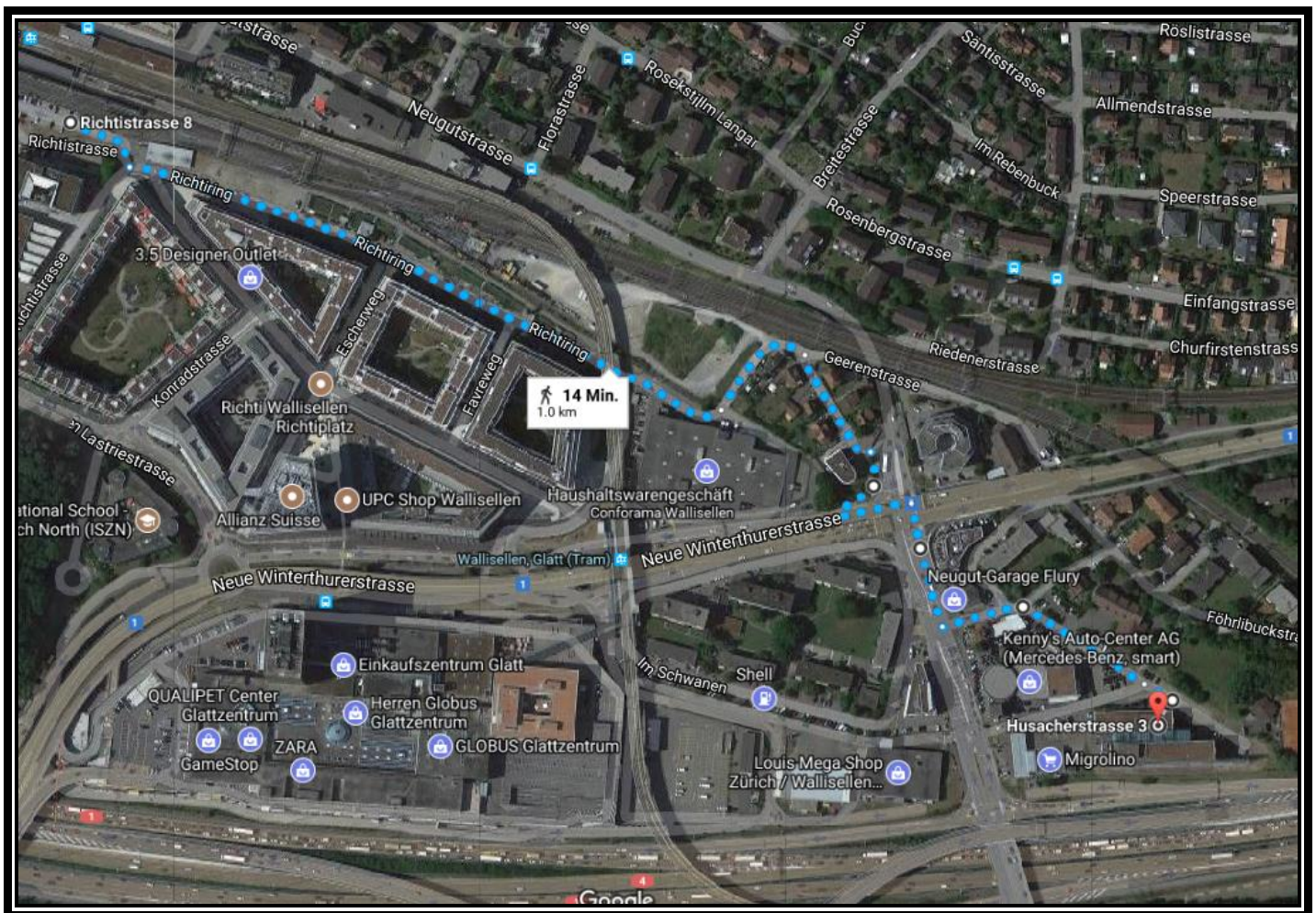
Footpath from station „Wallisellen“

The approx. 1 km walk takes you 10 – 14 min.

Note:

The detour via the “Geerenstrasse” is of course not necessary. Please just pass the supplier entrance of the “Conforama” and head for the underpass.

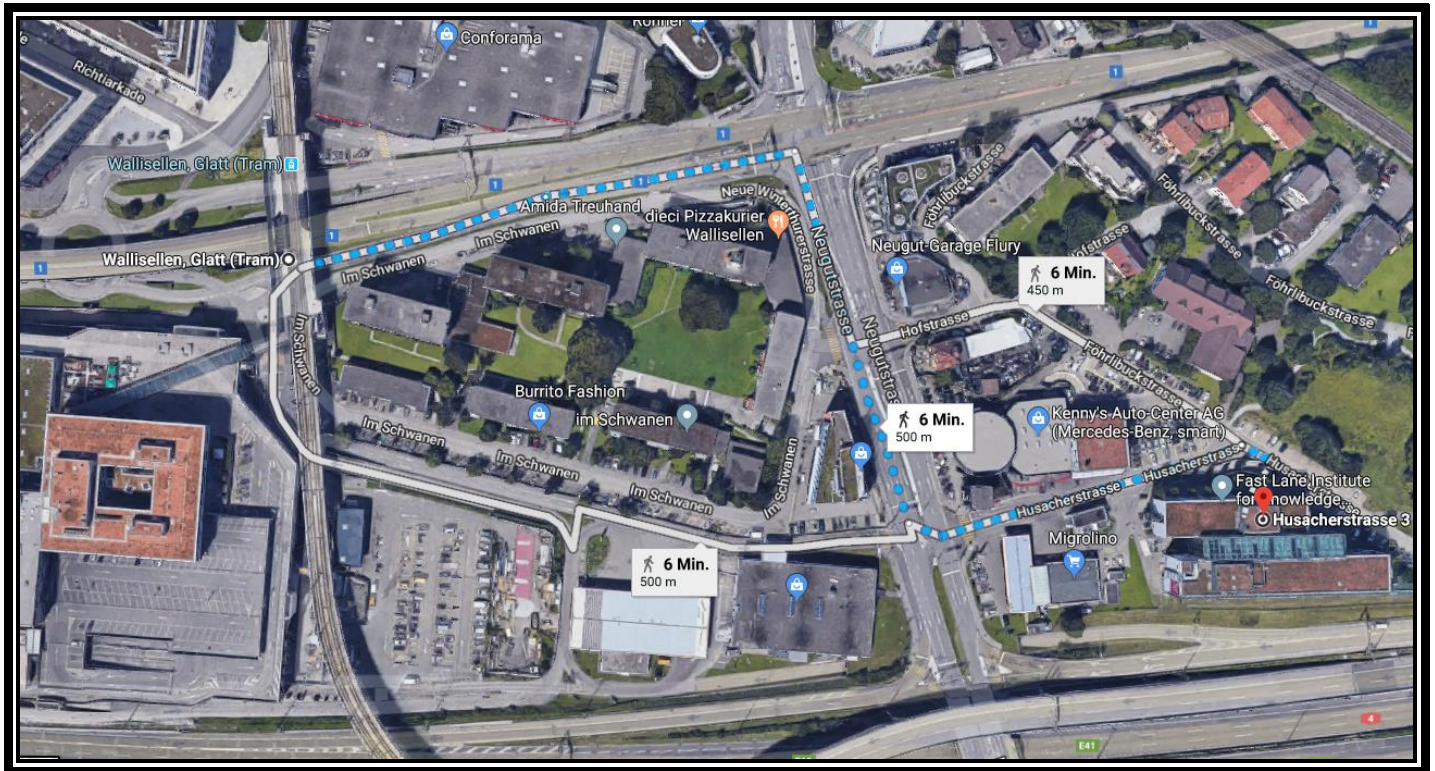
Turn left in the underpass. When leaving the underpass, go up the right ascent/passage.



Footpath from station „Wallisellen Glatt (Tram)“

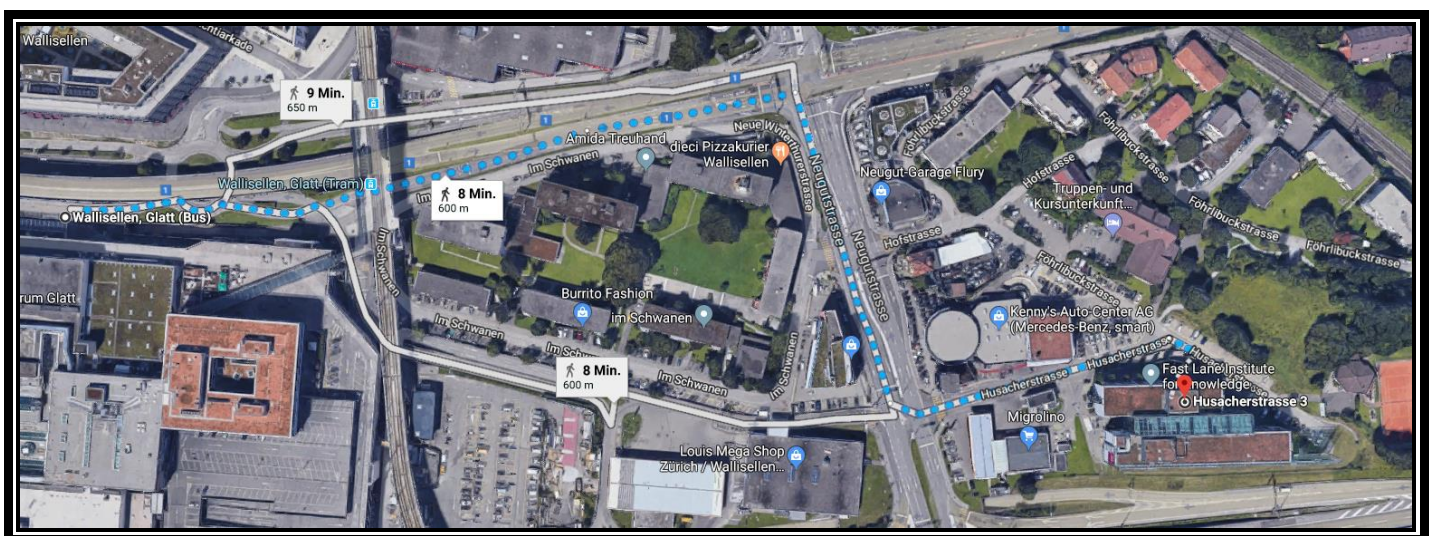
The approx. 500 m walk takes you 5 - 6 min.

Attention: At the stop do not go into the shopping mall Glatt, but walk down the stairs.



Footpath from station „Wallisellen Glatt (Bus)“

The approx. 600 m walk takes you 7 - 8 min.



➔ If you have any questions, please call us: **FAST LANE +41 (0)44 832 50 80 ☎**